

Specifications for Bypass Switch

Housed Bypass Switch

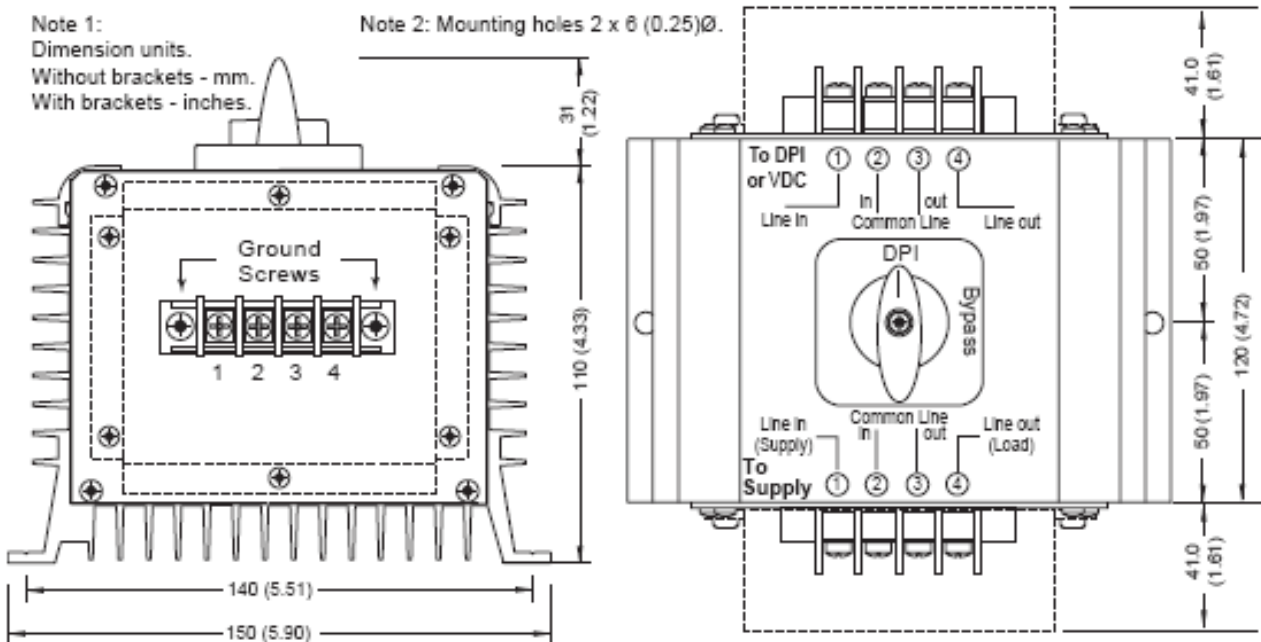
Description

Where no-break maintenance is required a by pass switch must be installed. It connects the supply directly to the load, "Bypass" position, and disconnects the power terminals of the inverter without interrupting the supply. When in "DPI" position the load is connected to the supply via the inverter.

Specifications

MODEL	BPSW25A
ELECTRICAL	
Maximum current:	25A
Maximum input voltage:	600Vac
TEMPERATURE	
Maximum working temperature:	45°C (113°F)
HOUSING	
Construction:	Extruded Aluminum
Height:	202mm (7.95in)
Width:	150mm (5.9in)
Depth:	141mm (5.55in)
Mass:	1kg (2.2lbs)

Mechanical outline



Ordering

Stock No:
5003-006

Description
Housed By-Pass Switch 25Amp



IGS Engineering Company

Smart Engineering solutions...

Email : info@igs.com.sa, gert@igs.com.sa,

O: 00966 346 2121, M: 00966 55 614 0055